

CONTACT US

424 Jefferson St, Saint Charles. MO 63301

636 - 724 - 9872

info@dotecengineering.com

www.dotecengineering.com

DESIGN OPTIMIZATION TECHNOLOGIES



ABOUT US

DOTec is licensed in all 50 states, Canada, Puerto Rico, Virgin Islands, the US Territories, South America and Europe.

Our group comprises of structural, electrical, industrial, civil and chemical engineers providing customizable, turnkey solutions to all sizes of businesses across all industries.

OUR HISTORY

DOTec Engineering is a multi-disciplinary, full-service engineering firm, founded by Dr. Al Gonzalez in 1991, and is located in the St. Louis metro area of St. Charles, Missouri.

***Engineering for your
success***



SECTORS



INDUSTRIAL

- Water Facilities
- Transportation
 - Roads
 - Bridges
 - Railroad
- Farming
- Chemicals
- Steel
- Brewing and Beverages
- Telecommunications
- HVAC

COMMERCIAL

- Steel Structures
- Medical, Scientific and Laboratory
- Commercial Buildings
- Greenhouses
- Manufacturing
- Sign Boards
- Billboards

RESIDENTIAL

- Sheds, Barns, Pavilions
- Canopy and Overheads
- Carports
- Home Building
- Greenhouses

ENERGY

- Renewable
 - Solar
 - Wind
- Oil and Gas
- Electric

SERVICES

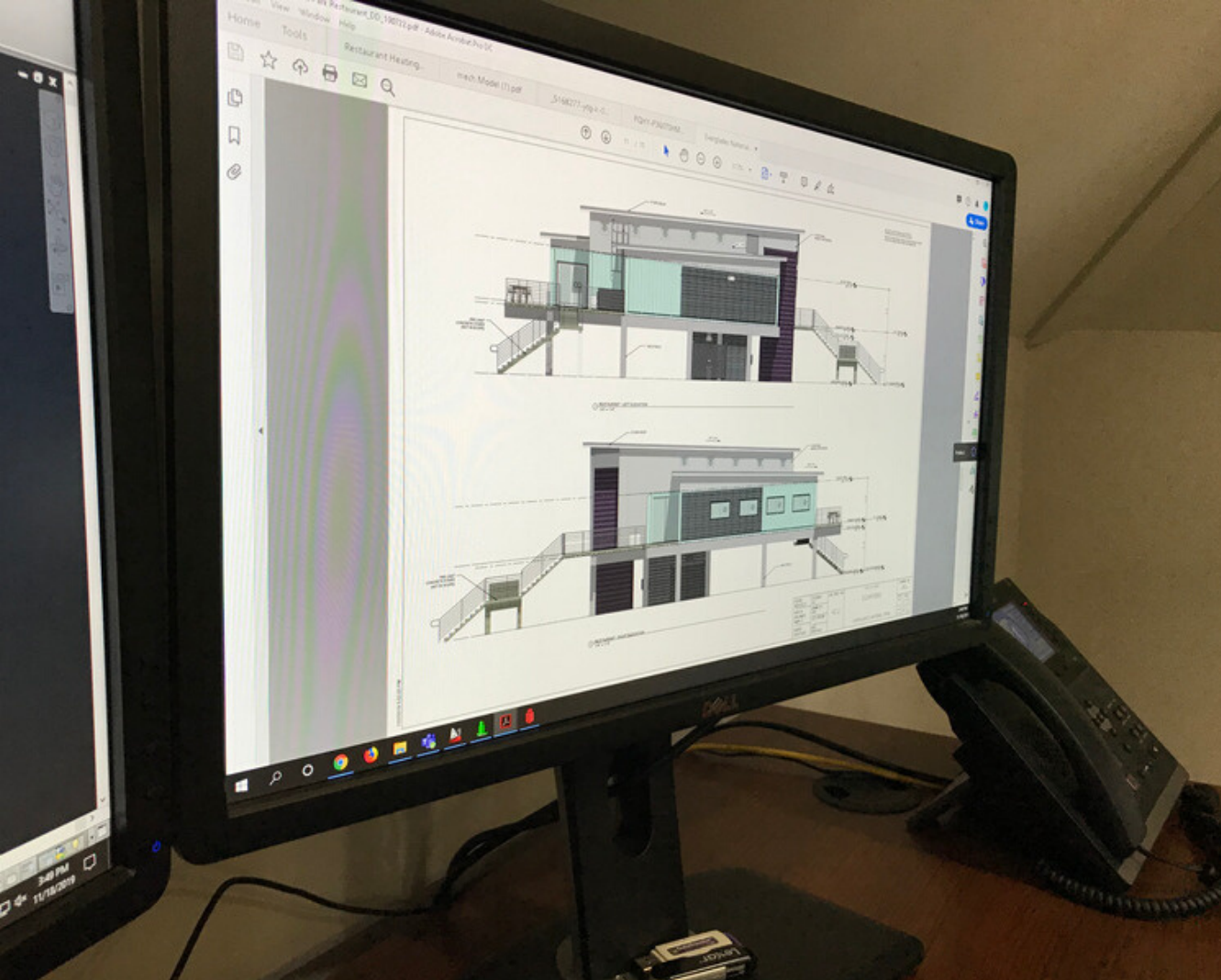
At DOTec engineering we provide a wide range of services, always adapting to your needs and objectives.



- Engineer of Records.
- Peer Design Review, code compliance and code studies.
- Construction permitting follow up.
- Construction Management
- Project management



DOTec is licensed in all 50 States, Virgin Islands, Puerto Rico, US Territories, Canada, South America and Europe.

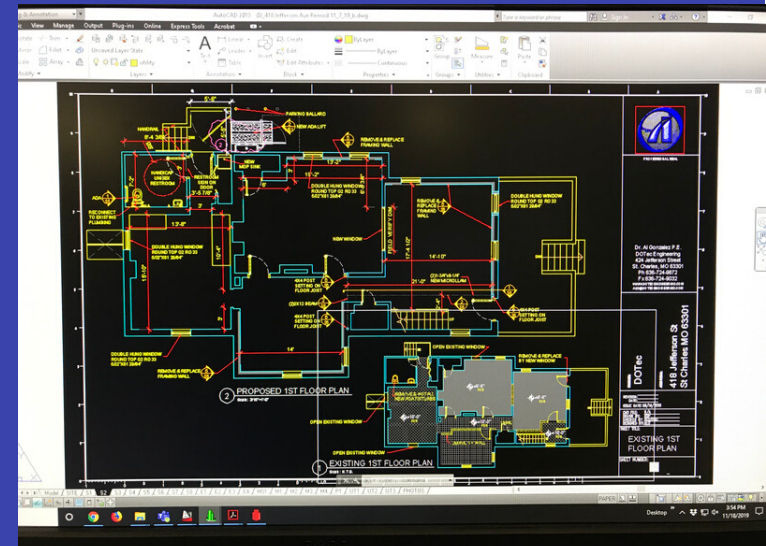


SOFTWARE



- RISA
- SAD 2000
- AutoCad
- REVIT
- SolidWorks
- MathCad
- StadPro
- Mpanel
- Pro-Engineer

**At DOTec we keep up
with the latest
technology to provide
the service you need.**



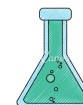


THE TEAM

We have in house over 25 professionals that cover the following disciplines:



Structural



Chemical



Civil



Drafting



Mechanical



Architecture



Electrical



Forensics



Plumbing

We have the perfect team to deliver your project in time and with the quality you expect.