



# **MULTI-DISCIPLINARY FULL SERVICE ENGINEERING FIRM**

*Customized Engineering Solutions*



[dotecengineering.com](http://dotecengineering.com)



STRUCTURAL



M.E.P



CIVIL



ARCHITECTURE

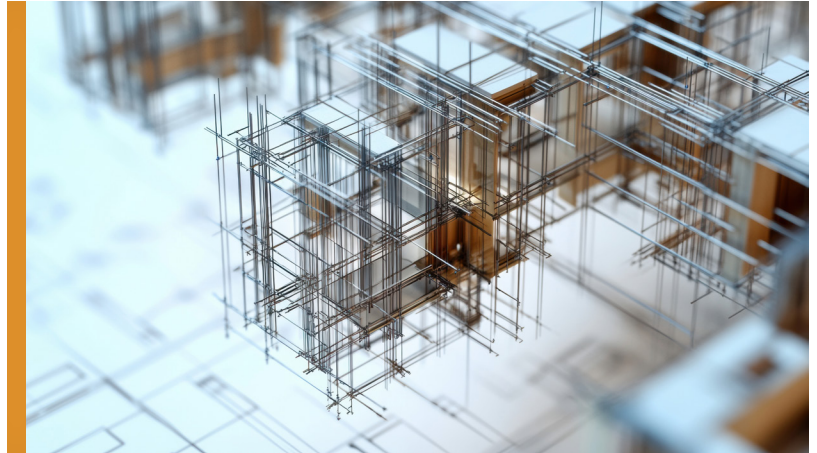
*Built on Strength. Designed for Safety.*

# **STRUCTURAL ENGINEERING**



## **Services include**

- ✓ Single, Multi-Story Modular Structures
- ✓ Storm Shelters - ICC 500
- ✓ Solar Roof and Ground Mount Panels
- ✓ Steel, Wood, Concrete, CMU Engineering
- ✓ Storage Rack Analysis
- ✓ Structural Assessment of Existing Buildings
- ✓ Rooftop Unit Replacement Analysis
- ✓ Elevated Concrete Slabs



## **BETTER, SMARTER DESIGN**



## **Additional Services**

- ✓ Tank/Silo/Bin Foundations
- ✓ Truck & Rail Unload Pits
- ✓ Pier, Piles & Anchor Design/Analysis
- ✓ Monorail/Hoist Systems
- ✓ Fall Protection Structures
- ✓ Emergency Access & Egress



*We found DOTec easy to work with and affordable. Their engineers were very responsive, helpful, and talented. We are very pleased with the work they did for us*

*- Kay, CEO*



*Inspecting Today. Protecting Tomorrow*

# **STRUCTURAL INSPECTIONS**



## **Foundations & Structural**

- ✓ Settlement (including Piers & Anchors)
- ✓ Buying & Selling Compliance
- ✓ Beam & Column Failures
- ✓ Crane Inspections
- ✓ Main Beams & Residential Inspections
- ✓ Fire Investigations (Structural & MEP)



## **Comprehensive Reporting**

- ✓ Litigation
- ✓ Insurance claims
- ✓ Basic owner concerns
- ✓ Maintenance



*"They were fantastic to work with! They quoted a fair price, met my difficult schedule, and provided a quality set of design documents for the project. I have recommended them often and will work with them again."*

*- Glen, CO-Founder*



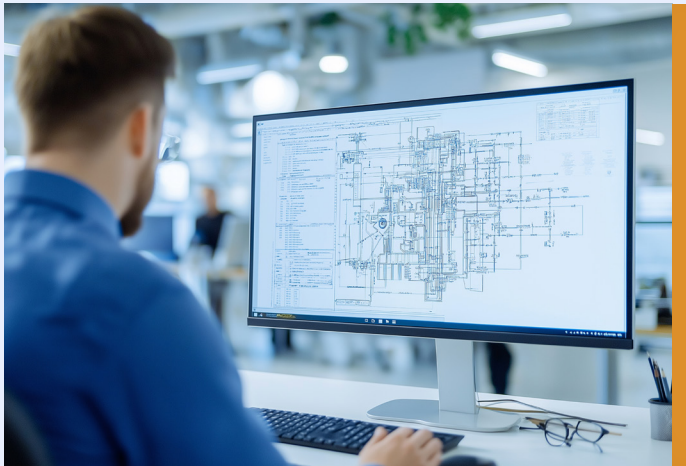
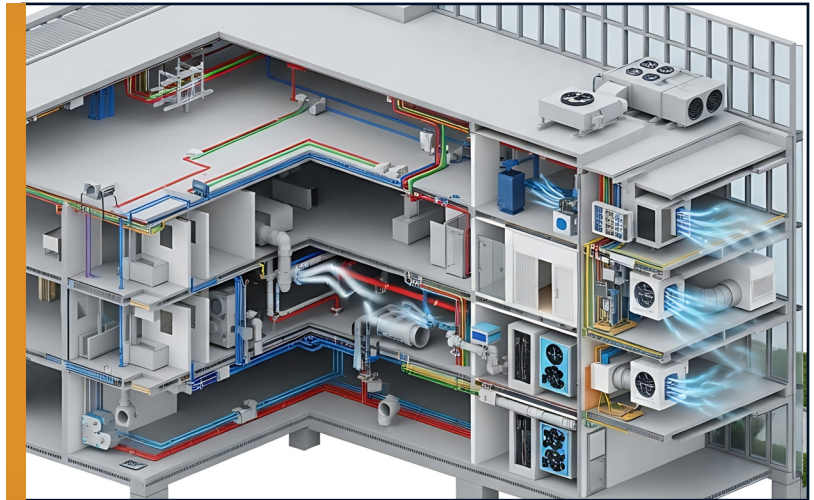
*Integrated Systems. Intelligent Design.*

# MEP ENGINEERING



## Mechanical

- ✓ Heating, Ventilation, and Air Conditioning
- ✓ Radiant Heating and Cooling
- ✓ Mission-Critical Infrastructure & Distribution
- ✓ Geothermal Heat Exchange Systems
- ✓ Mechanical System Inspections
- ✓ Building Information Modeling (BIM)
- ✓ Machine Design (Mechanical)
- ✓ Mechanical Master Planning



## Electrical

- ✓ Commercial, Industrial, and Residential Lighting
- ✓ Photometrics and Lighting Analysis
- ✓ IECC Energy Compliance Evaluation & Calculations
- ✓ Grounding & Lighting Protection
- ✓ IS/IT and Data Server Applications
- ✓ Sustainable Design/Green Building Focus



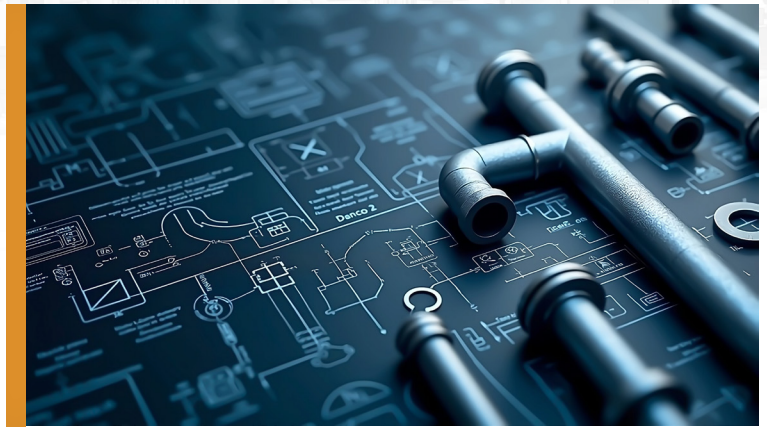
*The personnel with whom I dealt with, up to and including the principal engineer, were highly skilled, knowledgeable & professional. They tackled every challenge with a "can do" attitude and saw to it that the structural and mechanical elements of the project were first rate, safe and conformed to the specifications.*

*- Bill, Senior Project Manager*



## Plumbing

- ✓ Potable Water Systems
- ✓ Plumbing, Storm, and Waste Drainage Systems
- ✓ Distilled Water Distribution Systems
- ✓ Specialty Plumbing for Foundations, Displays, Etc.
- ✓ Reverse Osmosis Water Distribution Systems
- ✓ Process Piping



## Fire & Security

- ✓ Fire Alarm Systems
- ✓ IT and Tele/Data Integrations and Device Layouts
- ✓ Security Systems
- ✓ Intercom and Nurse Call Systems
- ✓ Raceways (Security Systems & Access Controls)

**Our Company has a proven success rate, providing quality engineering services to public and private sector clients since 1991. We are dedicated to personalized service along with the highest quality cost-efficient designs that consistently exceed expectations.**



*Transforming Visions into Civil Solutions.*

# **CIVIL ENGINEERING**



## **Site Design**

Experience with industrial & commercial facilities that include office applications, fire houses, police stations, and residential applications.

- ✓ Foundations
- ✓ Parking & Access Development
- ✓ Potable Water & Sewage Design
- ✓ Utilities & Fire Hydrant Locations
- ✓ Predesign for ADA Compliance



## **Stormwater Management**

Reduce runoff, prevent erosion and flooding while improving water quality by implementing stormwater management.

- ✓ Retention Pond Design
- ✓ Hydrology/Hydraulics Advanced Studies

## **Land Development**

Our skilled engineers can evaluate and identify the most appropriate erosion control measures for your project.

- ✓ Erosion Prevention
- ✓ 3D Civil, Cut and Fill Computations





*Designing Beauty. Building Strength.*

# ARCHITECTURAL ENGINEERING



## Core Services

- ✓ Structural Design & Analysis
- ✓ Building Systems Engineering
- ✓ Energy Efficiency & Sustainability
- ✓ Construction Support
- ✓ Code Compliance & Safety Analysis
- ✓ Forensic Engineering



**Our architectural engineering services bring together innovative design and technical precision to create buildings that perform beautifully.**

**We deliver structural solutions, efficient building systems, and seamless integration with architectural concepts—ensuring every space is safe, sustainable, and built to last.**

**From new construction to complex renovations, we turn design visions into engineered reality with clarity, expertise, and a commitment to excellence.**



# YOUR ROAD MAP FROM CONCEPT TO CREATION

## Phase 1

Your Idea, Project,  
or Issue

## Phase 2

Goals & solutions are laid out  
with our team

## Phase 3

DOTec experienced engineers  
work their design magic

## Phase 4

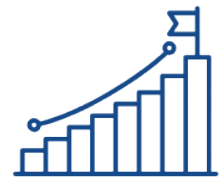
Continued communication to  
ensure high quality service

## Phase 5

Engineering solution provided to  
your satisfaction



**LICENSED  
NATIONWIDE**



**30 YEARS OF  
EXPERIENCE**



**SMALL OR  
LARGE PROJECTS**



**QUOTES IN 24HRS**



# SECTORS WE SERVE

## ENERGY

We have comprehensive knowledge of local energy regulations and requirements.

DOTec Engineering helps expedite the permit approval process at statewide, municipal, and local level which helps our clients complete their projects on time and within budget.



## INDUSTRIAL

We personalize industrial projects to fit your needs. Industrial and commercial companies must ensure the efficient production of quality products to stay competitive.

Here at DOTec, we help you optimize your processes through our wide variety of services.

## RESIDENTIAL

Our priority is to help households accomplish their goals and finish their projects.

DOTec is a certified Home Advisor engineering agent for the Metro St. Louis area and will provide thorough site survey inspections with P.E. sealed summary letters, if required.



## COMMERCIAL

We provide accurate and reliable services so you can move forward with your commercial projects.

We are dedicated to providing personalized service along with the highest quality cost-efficient designs that consistently exceed expectations.

*From Vision to Solution*

# **DESIGN SMARTER BUILD STRONGER TOGETHER**



## **Contact Our Sales Team**

 +1 (636) 724-9872

 [info@dotecengineering.com](mailto:info@dotecengineering.com)



[dotecengineering.com](https://dotecengineering.com)

**Follow us**  
**@dotecengineering**



Because of continuing technological advances, specifications, and options are subject to change without notice.

Copyright @ 2026, DOTec Professional Corporation

